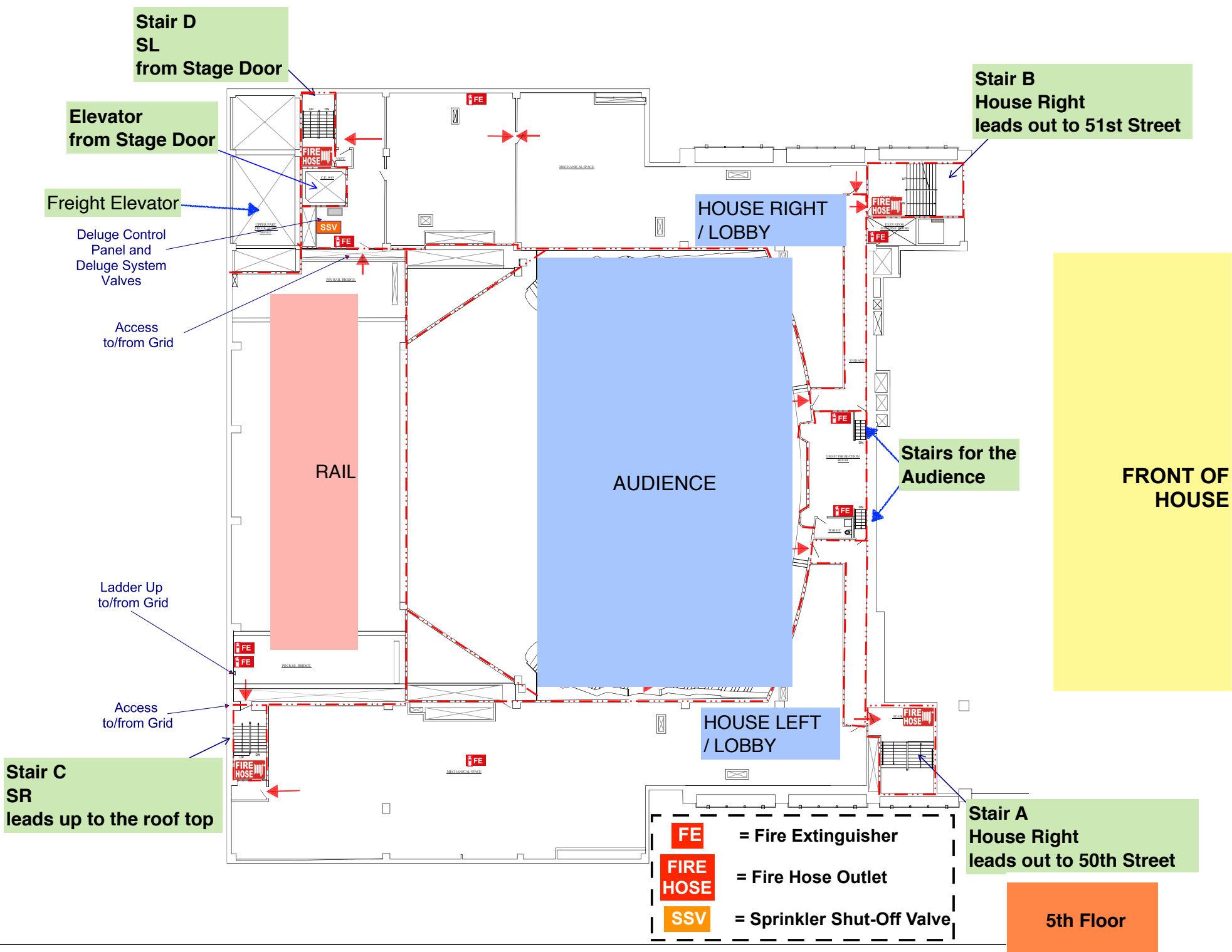


Drawings are for use only as part of the Theatre's Fire & Emergency Preparedness Plan herein to show only diagrammatically general locations of fire safety related equipment. No other use is intended nor allowed of these drawings.



Stair D  
SL  
from Stage Door

Elevator  
from Stage Door

Freight Elevator

Deluge Control  
Panel and  
Deluge System  
Valves

Access  
to/from Grid

RAIL

HOUSE RIGHT  
/ LOBBY

AUDIENCE

Stairs for the  
Audience

FRONT OF  
HOUSE

Ladder Up  
to/from Grid

Access  
to/from Grid

Stair C  
SR  
leads up to the roof top

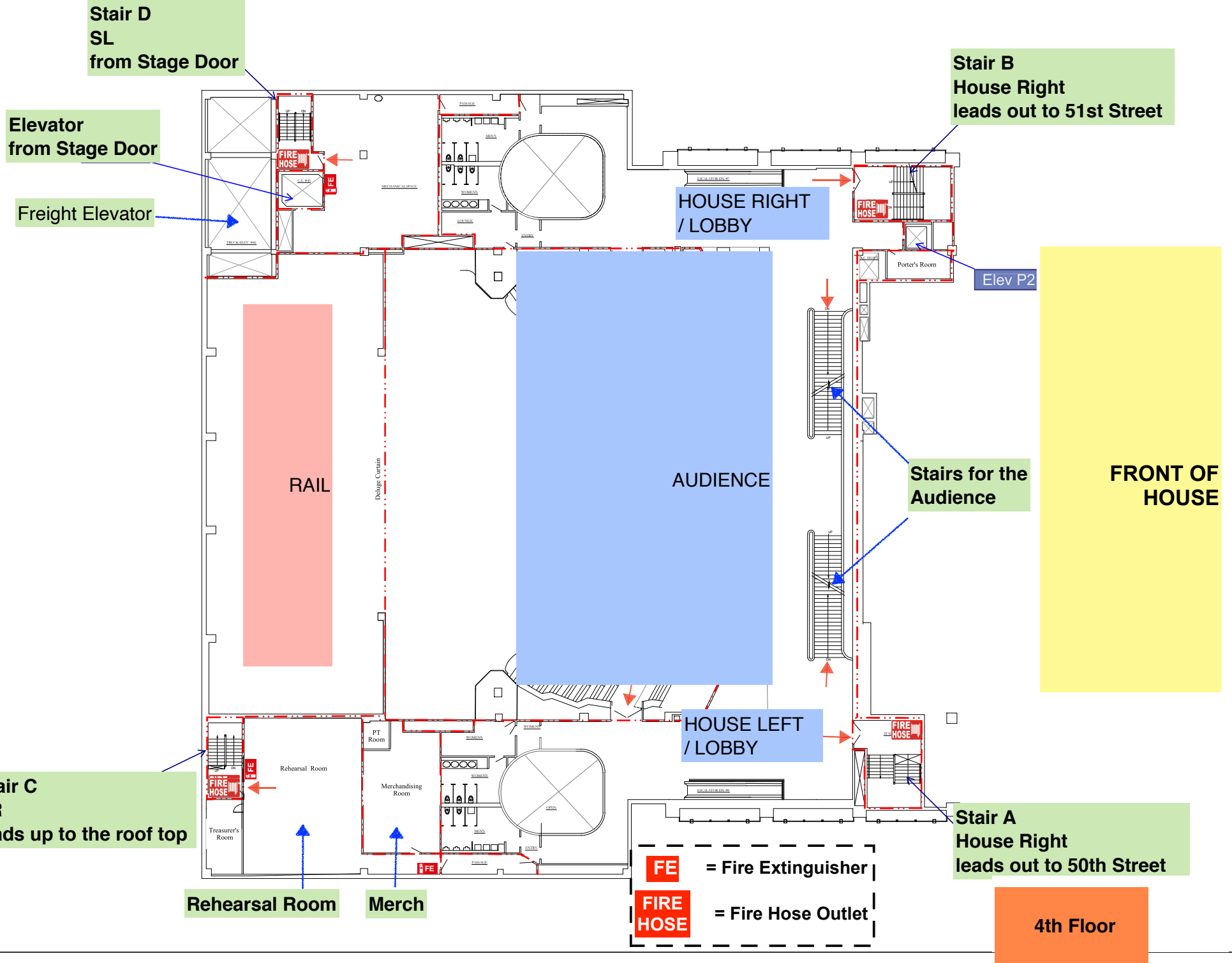
HOUSE LEFT  
/ LOBBY

Stair A  
House Right  
leads out to 50th Street

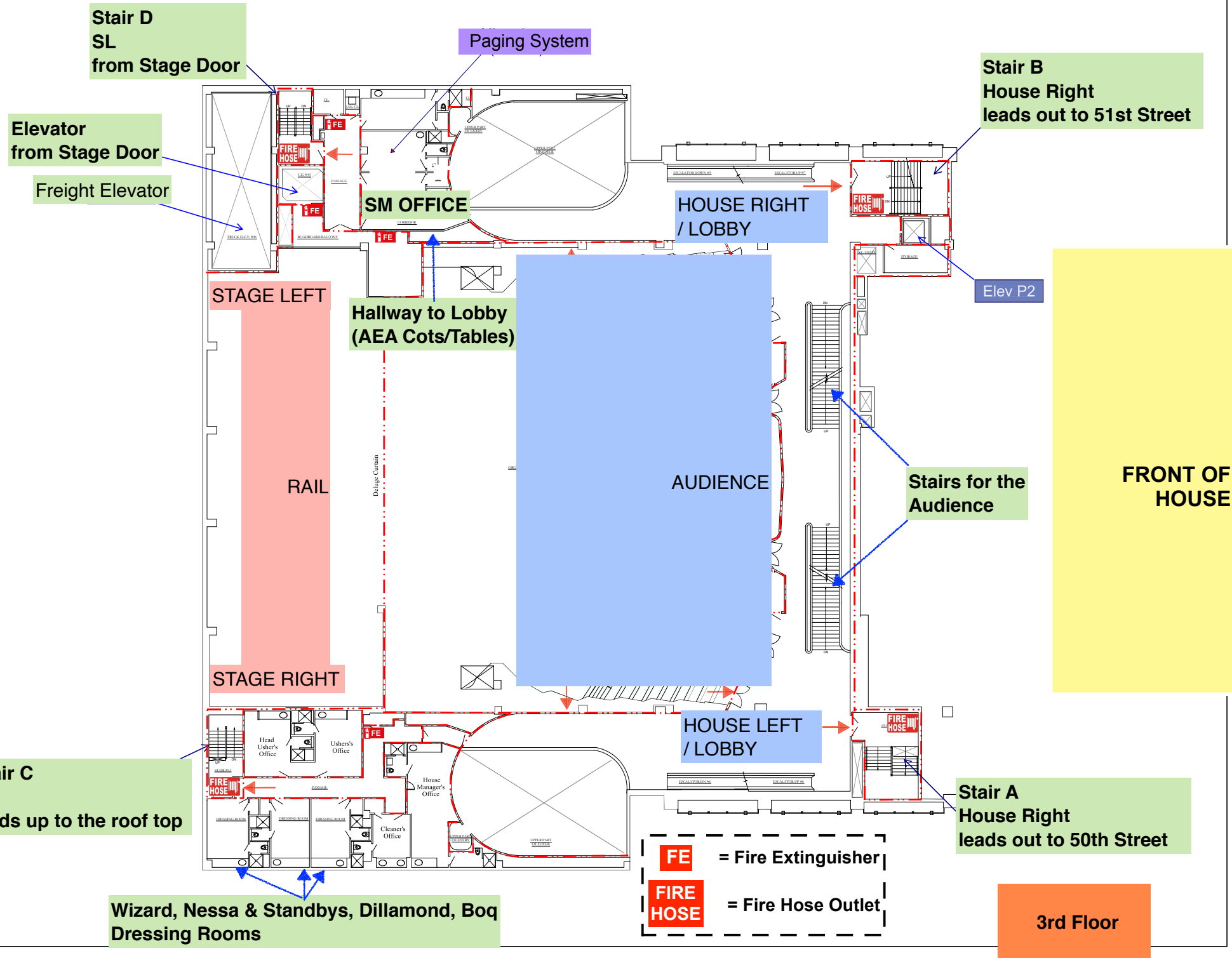
- FE** = Fire Extinguisher
- FIRE HOSE** = Fire Hose Outlet
- SSV** = Sprinkler Shut-Off Valve

5th Floor

Drawings are for use only as part of the Theatre's Fire & Emergency Preparedness Plan herein to show only diagrammatically general locations of fire safety related equipment. No other use is intended nor allowed of these drawings.



Drawings are for use only as part of the Theatre's Fire & Emergency Preparedness Plan herein to show only diagrammatically general locations of fire safety related equipment. No other use is intended nor allowed of these drawings.



Drawings are for use only as part of the Theatre's Fire & Emergency Preparedness Plan herein to show only diagrammatically general locations of fire safety related equipment. No other use is intended nor allowed of these drawings.

Stair D  
SL  
from Stage Door

Elevator  
from Stage Door

Freight Elevator

Ladder Up  
to Fly Floor

Stair down  
to Trap

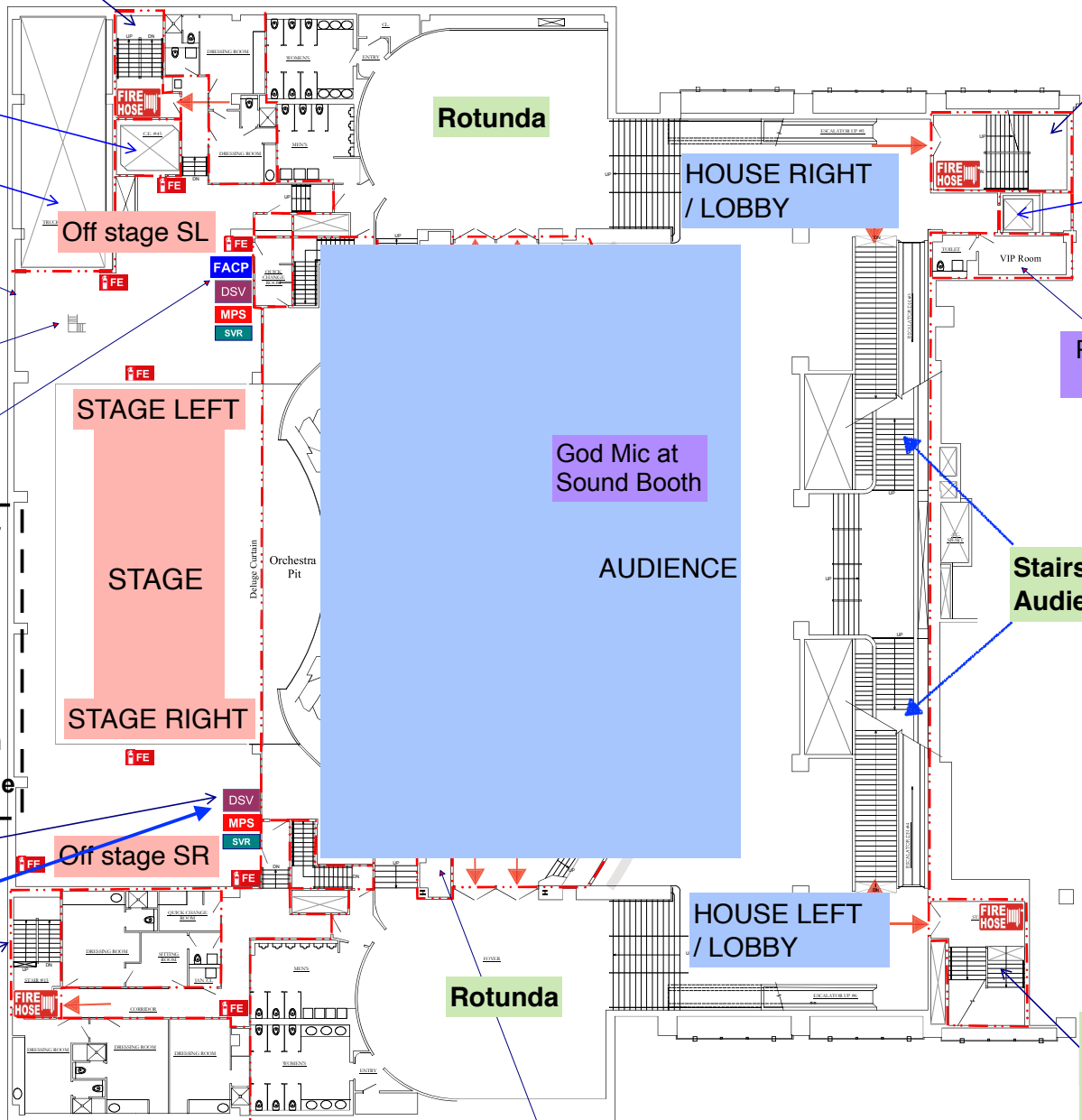
Paging System

- FE** = Fire Extinguisher
- FIRE HOSE** = Fire Hose Outlet
- FACP** = Fire Alarm Panel
- DSV** = Deluge System Shut-off Valve
- MPS** = Manual Pull Station
- SVR** = Smoke Vent Release

Deluge System  
Shut-off Valve  
on 5th Floor  
Stage Left

Paging System

Stair C  
SR  
leads up to the roof top



Stair B  
House Right  
leads out to 51st Street

HOUSE RIGHT  
/ LOBBY

Elev P2

Paging System  
to Lobbies

God Mic at  
Sound Booth

AUDIENCE

Stairs for the  
Audience

FRONT OF  
HOUSE

HOUSE LEFT  
/ LOBBY

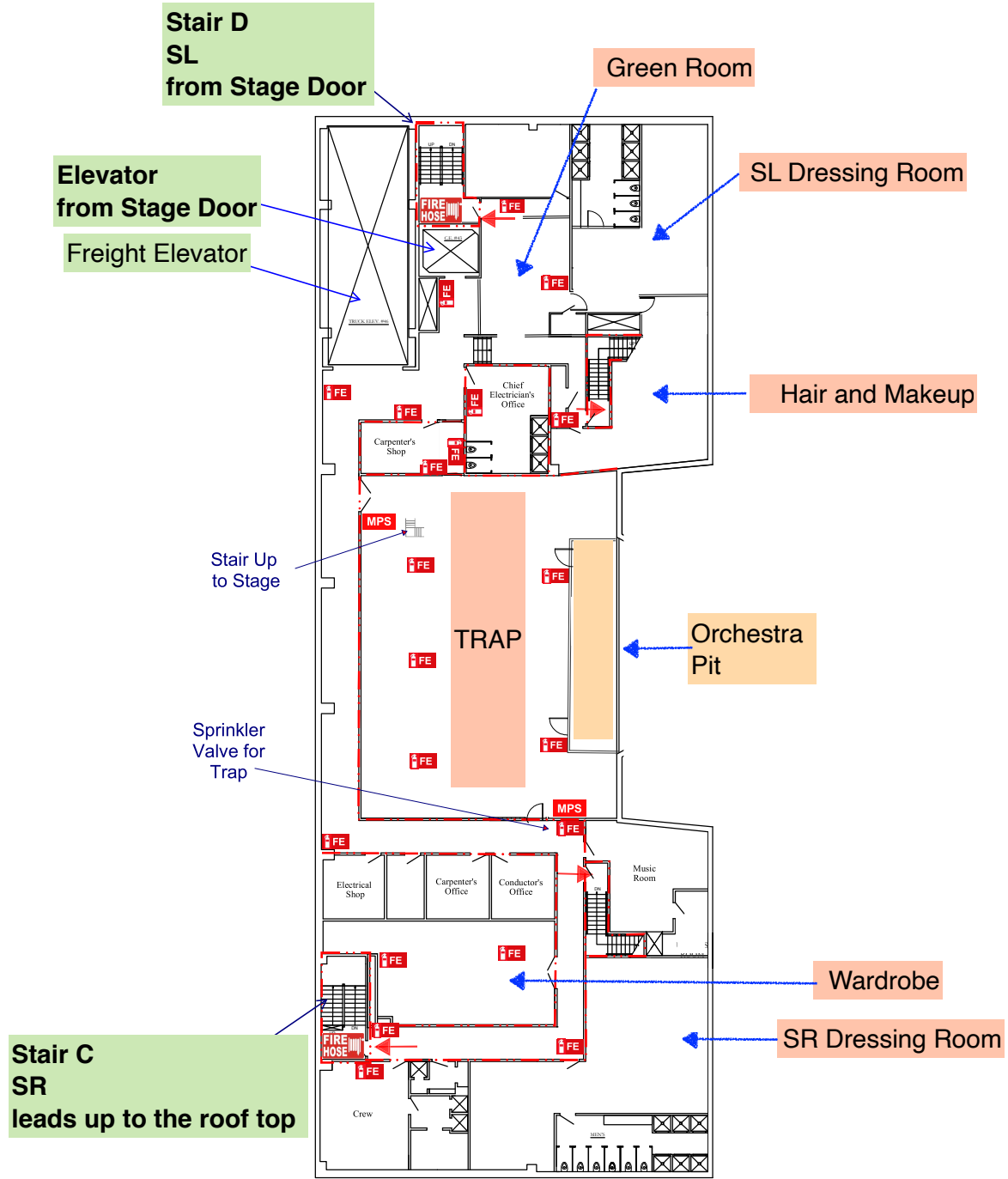
Rotunda

Stair A  
House Right  
leads out to 50th Street

Paging System  
& God Mic

2nd Floor/  
Stage Level

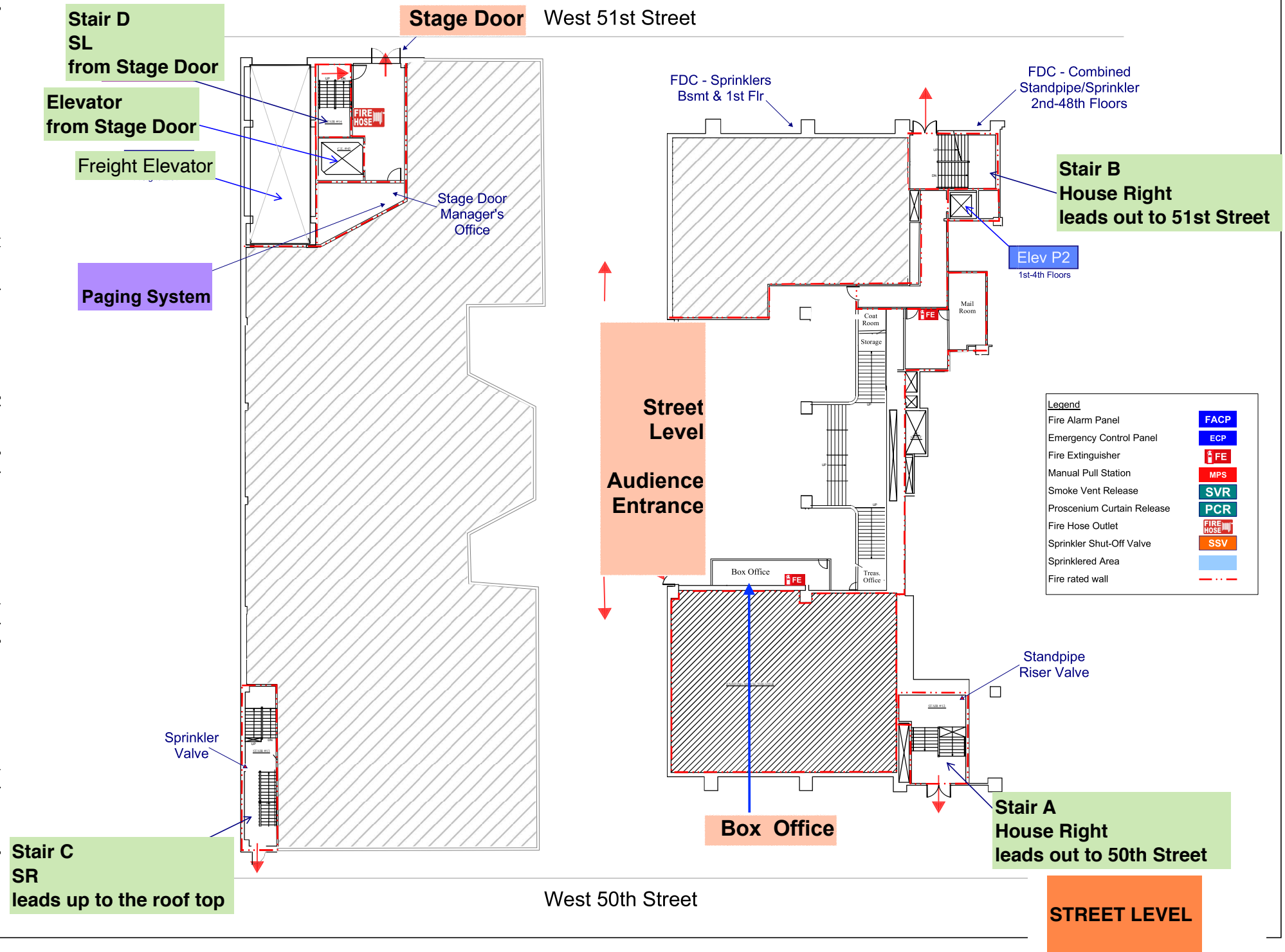
Drawings are for use only as part of the Theatre's Fire & Emergency Preparedness Plan herein to show only diagrammatically general locations of fire safety related equipment. No other use is intended nor allowed of these drawings.



<b>FE</b>	= Fire Extinguisher
<b>FIRE HOSE</b>	= Fire Hose Outlet
<b>MPS</b>	= Manual Pull Station

**TRAP**

Drawings are for use only as part of the Theatre's Fire & Emergency Preparedness Plan herein to show only diagrammatically general locations of fire safety related equipment. No other use is intended nor allowed of these drawings.



**Stair D  
SL  
from Stage Door**

**Elevator  
from Stage Door**

**Freight Elevator**

**Paging System**

**Stage Door West 51st Street**

Stage Door  
Manager's  
Office

FDC - Sprinklers  
Bsmt & 1st Flr

FDC - Combined  
Standpipe/Sprinkler  
2nd-48th Floors

**Stair B  
House Right  
leads out to 51st Street**

**Elev P2**  
1st-4th Floors

**Street Level  
Audience  
Entrance**

Legend	
Fire Alarm Panel	<b>FACP</b>
Emergency Control Panel	<b>ECP</b>
Fire Extinguisher	<b>FE</b>
Manual Pull Station	<b>MPS</b>
Smoke Vent Release	<b>SVR</b>
Proscenium Curtain Release	<b>PCR</b>
Fire Hose Outlet	<b>FIRE HOSE</b>
Sprinkler Shut-Off Valve	<b>SSV</b>
Sprinklered Area	<b>[Blue Box]</b>
Fire rated wall	<b>[Red Dashed Line]</b>

Sprinkler  
Valve

Standpipe  
Riser Valve

**Stair C  
SR  
leads up to the roof top**

**Box Office**

**Stair A  
House Right  
leads out to 50th Street**

West 50th Street

**STREET LEVEL**